

PC PLAYER SOFTWARE OPERATION

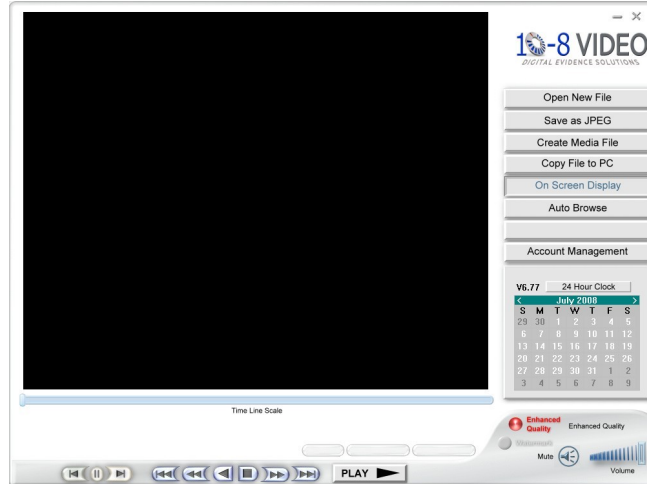
Install the 10-8 Player software by installing the CD supplied with your system. If the CD is not available, you may download it from the 10-8 video web site by entering the following address in your browser:

<http://www.10-8video.com/dvr/dvr.exe>

This will download the player to your computer. When asked, select 'run' and the software will install. Double click on the 10-8 player icon to load the player.

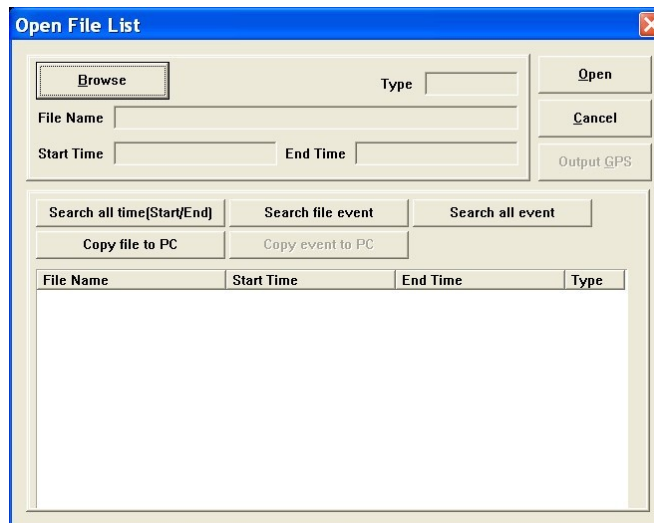
A box will come up asking you for 'account' and 'password'. The default for these from the factory is the word 'root' for both account and password (without the quotes).

When the program starts, you can use the 'Account Management' button to change the account and password. If you wish to use the program without a password or account, just select the 'Account Management' button and leave all boxes blank and hit OK. The program will still ask you for your account and password when the program starts, but just hitting OK or the return key will start the program.



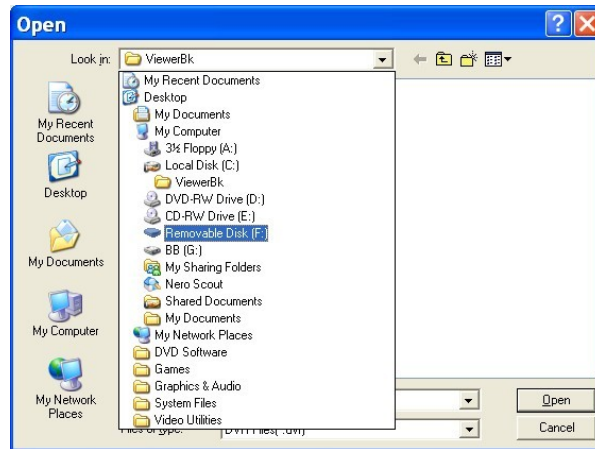
3. How to play a recording:

(1) Click on 'Open New File' Button



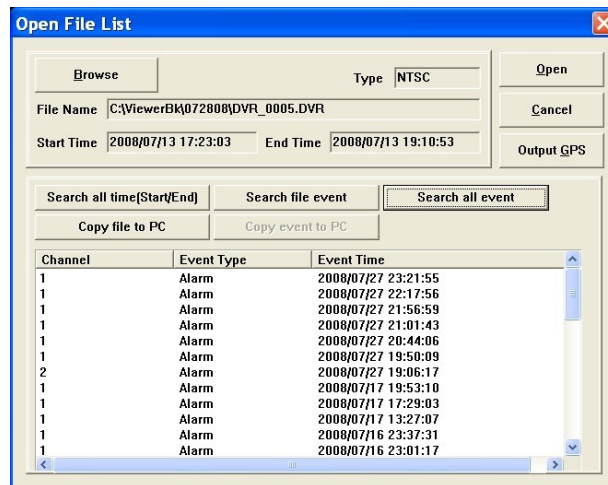
(2) Click on Browse and select the file location. If the files are already on the hard

drive, just select the location or if on a CF card, select the drive letter associated with your card reader.



(3) Select the file by click on file with a .DVR extension and then selecting 'Open'. Select the file on the next screen and select 'Open' to play. Or select 'Search All Event' to bring up a screen with all events that were recorded sorted by date and time.

Select the event you wish to play and select 'Open'.



You will now be in the main player screen ready to play your video. Press the large 'PLAY' button to begin the video.

Clicking on the speaker icon will mute the audio. Click again to un-mute the audio and use the sliding volume control and your speaker volume to adjust the volume. Clicking on the 'On Screen Display' button will turn the date/time display on the video on and off.



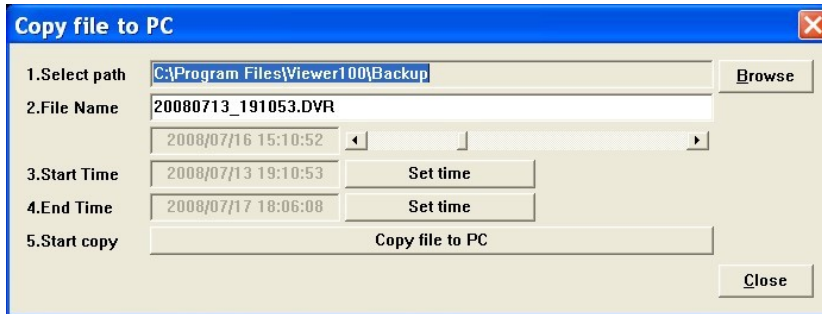
The Play speed adjustment panel works similar to a DVD or VCR panel. You can speed up, slow down, and view frame by frame with this panel. You can also use the slider button under the video to quickly go forward or backward in the video. The 2 arrows on either side of the pause button will play the video in slow motion. Repeated use of the pause button will advance frame by frame.

Pressing the 'Save to JPEG' button will save the current frame in the display to a common .jpg file on your hard drive.

The 'Create Media File' button will allow you to save to .avi and .wmv files. Note however that the .avi files are quite large! The preferred method of saving files is the 'Copy File TO PC'. This will kept the quality at the best resolution and the file will be saved in it's native proprietary format. If you need to convert to a common format, I recommend the .wmv option.

Before using the 'Copy File to PC' option, make a note of the beginning and end times of the event of video you wish to save. Then select the option to open to the following screen:

'Copy File To PC':



Select the path and file name you want the video saved to. Be sure and leave the .DVR extension on the file.

Move the slider to the time in the video you wish to begin recording and then select the 'Set time' button next to the Start time window. For finer adjustment, use the left and right arrow buttons. Move the slider to the time that you wish to set for the end of the video and select 'Set time' button on the End Time line. Once the start and end times are correct, select the 'Copy file to PC' button to save the file. This will create a video file that is retained in the native format for best resolution and court use.

Archiving Entire CF card:

Many departments will ask their officers to bring in their CF cards when the display shows that there is 10% or less remaining space on the card. They will then create individual directories (folders) for each officer on a hard drive. Then when an officer needs to archive their CF card, you will create a sub directory under their name. I recommend that the individual folders for that officer be named the date of the archive. For instance, if you are archiving a card and the date is May 1st 2009, you would create a folder called '050109'. You would then use Windows Explorer to drag all of the contents of the card to that folder. By using a date format for naming folders, it makes it easy to recall an event that needs to be viewed later. Under each officer's named folder, you will then have a series of folders named by the date of the archive.

Now return the card to the officer's patrol unit and re-insert into the 10-8 recorder. Power should be off when inserting or removing a card. Because the recorder will automatically overwrite, the display will continue to count down the available space until 0% is reached and go back to 99%. At that point, the OLDEST events are overwritten first, not erased all at once. This will give you redundancy on events and also insure that nothing is missed. Other units on the market will stop recording when their media is full, risking the chance that an important event will be missed!